

# BioStation A2

Fingerprint IP Access terminal



Suprema BioStation A2 is the most advanced fingerprint access control and time attendance terminal featuring Suprema's next generation biometric technology and security platform. BioStation A2 provides class leading performance through World's best matching performance, uncompromised security and accuracy along with top-notch usability. Preloaded with BioStar 2, BioStation A2 operates as a web server which offers extra flexibility in system design for sites large or small.

# BioStation A2

## Fingerprint IP Access terminal

### Features



#### World's Fastest Performance

- Powered by 1GHz iMX6 Quad-core CPU
- Up to 150,000 matches per second (1:N)
- Data transfer speed up to 5,000 users/min



#### Improved Accuracy & Security

- Up to 5x enhanced recognition performance
- New advanced LFD(live finger detection) technology
- Improved optical sensor and algorithm



#### Expanded Capacity

- Max. 500,000 users
- 5mil text logs/50,000 image logs
- Large memory: 1GB RAM+ 8GB Flash



#### Best-in-class Features

- 5" IPS LCD touchscreen with reinforced glass front
- 2MP wide-angle camera for clear face image logs
- Android O/S with improved GUI
- Videophone support/Extensive RF card options



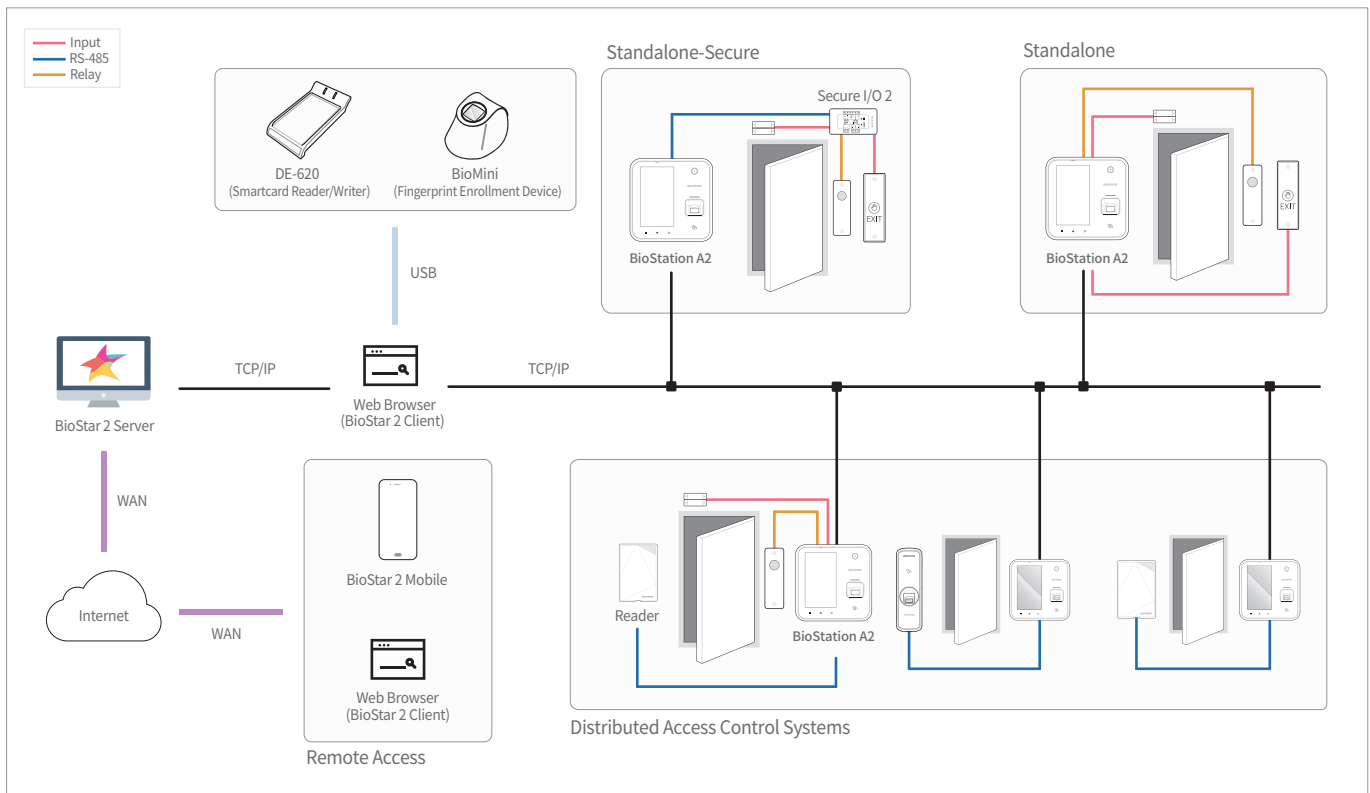
#### Versatile Interfaces

- TCP/IP, Wi-Fi, PoE(IEEE802.3af)
- USB host/OTG, SD card
- Wiegand, RS485, TTL I/O. relay

### Specifications

Biometric	Fingerprint								
Template	SUPREMA/ISO 19794-2/ANSI 378								
Extractor / Matcher	MINEX certified and compliant								
LFD	Supported								
RF Option	<table border="1"> <thead> <tr> <th>BSA2-OEPW</th> <th>BSA2-OHPW</th> <th>BSA2-OIPW</th> <th>BSA2-OMPW</th> </tr> </thead> <tbody> <tr> <td>125 KHz EM</td> <td>125 KHz HID Prox</td> <td>13.56MHz MIFARE MIFARE Plus, DESFire/EV1 FeliCa, iCLASS SE/SR, NFC</td> <td>13.56MHz MIFARE MIFARE Plus, DESFire/EV1 FeliCa, NFC</td> </tr> </tbody> </table>	BSA2-OEPW	BSA2-OHPW	BSA2-OIPW	BSA2-OMPW	125 KHz EM	125 KHz HID Prox	13.56MHz MIFARE MIFARE Plus, DESFire/EV1 FeliCa, iCLASS SE/SR, NFC	13.56MHz MIFARE MIFARE Plus, DESFire/EV1 FeliCa, NFC
BSA2-OEPW	BSA2-OHPW	BSA2-OIPW	BSA2-OMPW						
125 KHz EM	125 KHz HID Prox	13.56MHz MIFARE MIFARE Plus, DESFire/EV1 FeliCa, iCLASS SE/SR, NFC	13.56MHz MIFARE MIFARE Plus, DESFire/EV1 FeliCa, NFC						
CPU	1.0 GHz Quad Core								
Memory	1GB RAM + 8GB Flash								
Max. User	500,000 (1:1), 100,000(1:N)								
Max. Template	1000000(1:1), 200,000(1:N)								
Max. Logs	5,000,000(text), 50,000(image)								
LCD	5" IPS LCD with capacitive touchscreen								
LED	Multi-Color LED								
Sound	24 bit/Voice DSP (echo cancelation)								
Wi-Fi	Supported (IEEE 802.11 b/g)								
Interfaces	TCP/IP, RS485, Wiegand, TTL, Relays, USB								
SD Card	MicroSD up to 32GB								
PoE	Supported (IEEE 802.3af compliant)								
Tamper	Supported								
Power	DC 12V								
Operating Temperature	-20°C - 50°C								
Operating Humidity	0% - 80%, non-condensing								
Camera	2 MP wide-angle (1600 x1200)resolution								
Dimension (W x H x D)	155 mm x 155 mm x 40 mm								
Unit Weight	440g								
Certificates	CE, FCC, KC, RoHS, REACH, WEEE								

### System Configurations



### Suprema Inc.

17F Parkview Tower, 248, Jeongjail-ro, Bundang-gu, Seongnam-si, Gyeonggi-do, 13554, Rep. of KOREA

Tel: +82 31 783 4502 | Fax: +82 31 783 4503 | Inquiry: sales@supremainc.com | www.supremainc.com

©2018 Suprema Inc. Suprema and identifying product names and numbers herein are registered trademarks of Suprema, Inc. All non-Suprema brands and product names are trademarks or registered trademarks of their respective companies. Product appearance, build status and/or specifications are subject to change without notice.

[AHL-BSA2-180110-03-EN]

**Suprema**  
BIOMETRICS & SECURITY