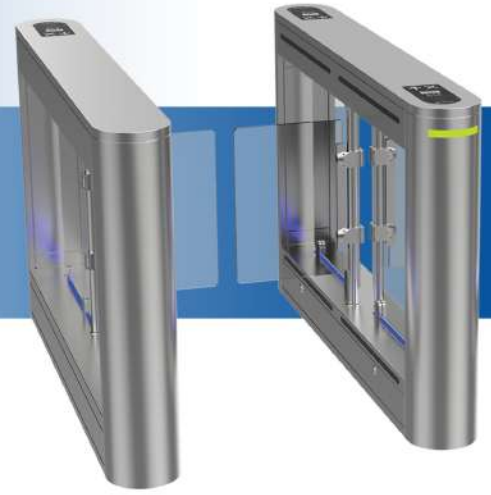


Swing Gate Turnstile 02

SI-111A/112A



Application

Office and administrative buildings .Ministries and public, buildings banks and financial institutions industrial installations, residential areas schools, colleges and universities.

Standard Equipment

- Driving motor DC24V brushless motor.
- Acrylic or stainless steel for optional.

Operating Environment

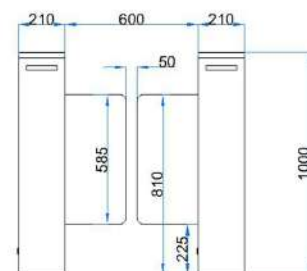
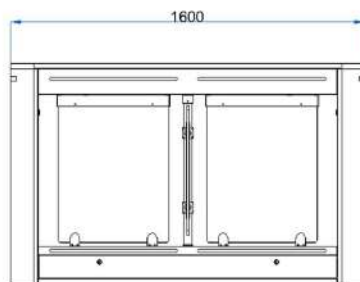
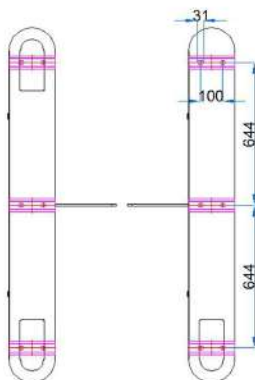
- Indoor, -25 C° ~70 C°.
- IP 55.
- MTBF 5 million times.

Dimension and material

- Size : 1600*210*1000mm.
- Materials : SUS304 brushed stainless steel.
- Arm material : Acrylic.

Electrical Equipment

- Power supply voltage : AC 220 ± 10% V 50 ± 10% HZ.
- Passing LED indicator : LED indicator.
- Method of positioning : Brushless motor + clutch + encoder.
- Direction of passing : Uni-directional/Bi-directional.- Passing width : 600~1200mm.
- IR sensor : Standard 6 pairs can extend to 10 pairs.
- Working environment : Indoor/Outdoor, -25°C~70°C.
- Relative humidity : ≤ 90%, no condensation.
- Opening speed : Fastest 0.5s, adjustable.
- Passing speed : 35-40 people/min.
- Angle of gate opening : 90°±5 °.
- Noise : < 50dB.
- Communication interface : Level/Pulse/RS485/RS232.
- Input interface : Relay(dry contact).
- Power : 30W(left/right), 60W(middle).



* Design & dimension subject to change without prior notice, please contact us for further information.